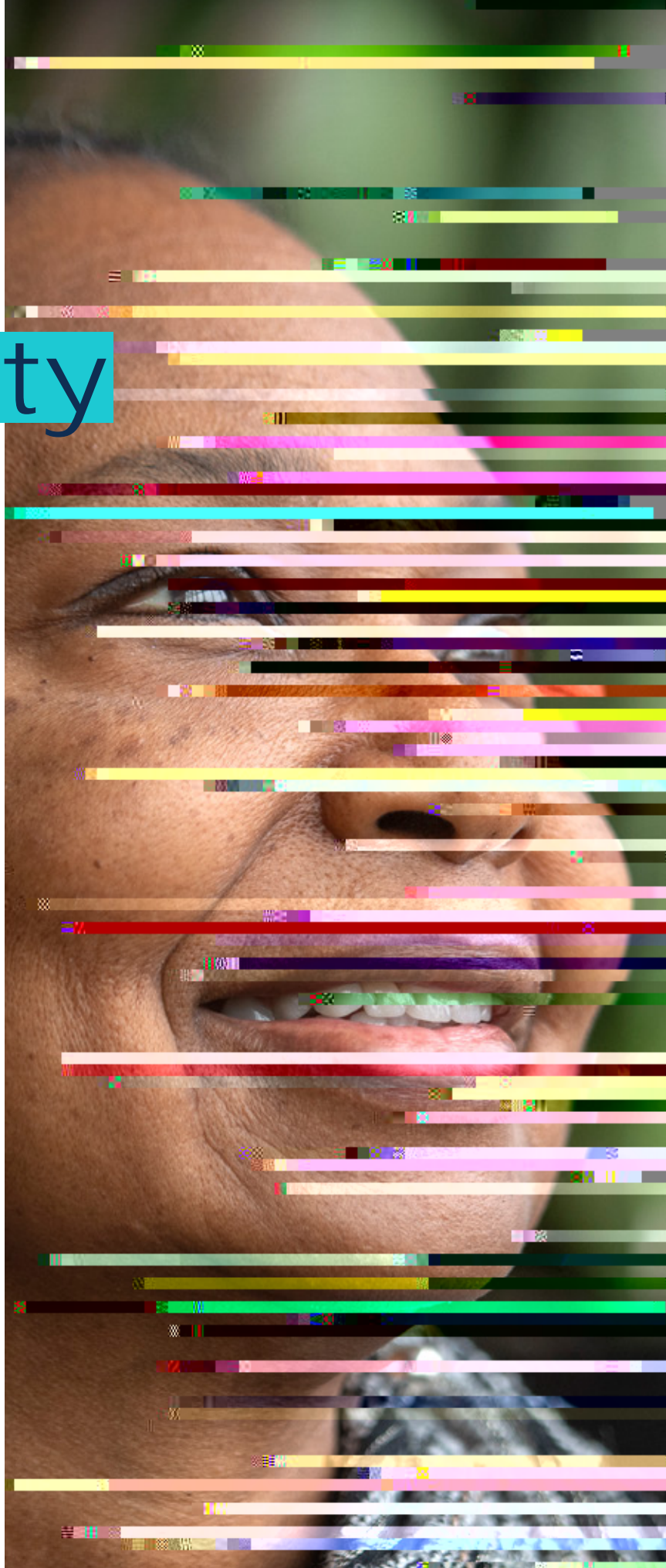
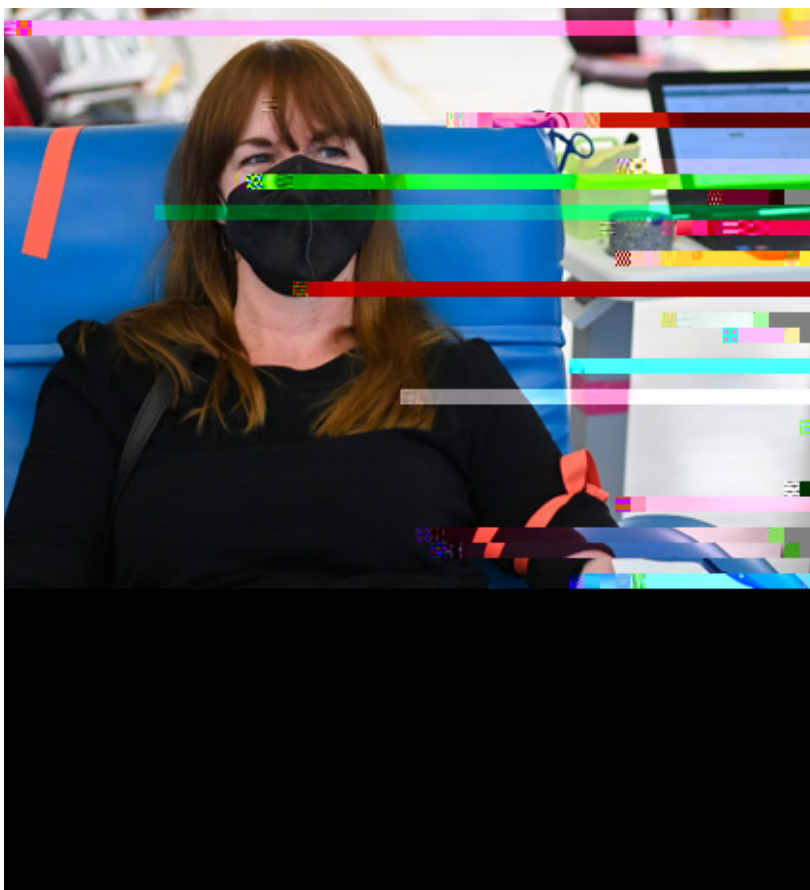


2023

Community

Report





A message from the President & CEO

At Corewell Health, people are at the heart of everything we do. We are here to help people be well, so they can reach their full health potential.

Our vision is a future where health is simple, affordable, equitable and exceptional. And every day, we are focused on relentlessly pursuing better health.

1.0 c 0 0 (1) 1. (2) 6 s 6.5) 49 (e) 7 s) 5 (j) her 5. 7 e- 3 5 y) 15. 7) 6.2 (n 6) is s 6.5m (3 5 y) m (2 9 A) 52. 4 h) 1 7 (n 2 9) 8 6 () 23 9 (6) 2 9 (2 4) 6.3

Local programs for health and healing

Corewell Health provides millions of dollars in community benefits to East, South and West Michigan every year. In 2022, the amount of our community benefit donation totaled **more than \$1 billion**.

- Community partnership programs: **\$8.4 million**
- All other community benefit programs: **\$9.8 million**
- Health clinics and other subsidized health services: **\$193.5 million**
- Health professions education: **\$153.2 million**
- Research: **\$9.3 million**
- Donations and contributions: **\$6.6 million**
- Uninsured charity care: **\$29 million**
- Discounted care (under 250% federal poverty level): **\$6.4 million**
- Gaps in funding for Medicare and Medicaid rates: **\$680 million**



Advocating for health

As part of our commitment to our patients and community, Corewell Health advocates for programs and initiatives that support safe, affordable, equitable and best-in-class care. Through advocacy, we elevate our patients' expressed needs for:

- Sustaining access to critical health services important in every community – services like adult and pediatric emergency care, community health education, health screening and more.
- More innovative health care payment models to make health care more affordable and payment structures simpler.
- Digital health solutions such as virtual nursing.
- A strong clinical workforce for our future.



Fit and Healthy Families in the Kitchen

**How many fruits and veggies do we need in a day?
"Five!" answers 11-year-old Reina Hori.**

Fit and Healthy Families in the Kitchen classes are offered free of charge thanks to a partnership between Corewell Health Zeeland Hospital and Community Action House in Holland. Community members learn about nutrition during fun and interactive classes taught by a registered dietitian.



20,000th student receives free Student Heart Check

At just 15, Karl Wolski plays soccer and basketball at Dearborn High School and runs track for a club team in the city. He also was the 20,000th recipient of a Student Heart Check screening.

“As a high school athlete, my son pushes his body to the limit every day,” said his dad, Rich Wolski. “We take all three of our kids to the pediatrician for an annual physical each year. But the Student Heart Check program at Corewell Health in Southeast Michigan offers another layer of protection to keep Karl as safe as possible.”

The Student Heart Check is staffed by Corewell Health volunteer practitioners and takes about one hour. The screening includes a full medical history, blood pressure check, electrocardiogram and a quick look echocardiogram or ultrasound image of the heart. Its primary purpose is to detect hypertrophic cardiomyopathy, the leading cause of sudden cardiac arrest in student athletes.



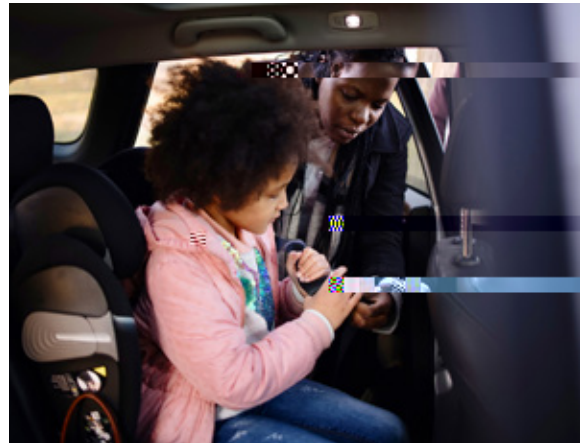
Providing child passenger safety in Michigan

Vehicle passenger safety studies reveal that nearly 80% of children's car seats used nationwide are not properly installed. To address this problem, Corewell Health offers help through several programs across the state.

In Southeast Michigan, we teamed up with Mike Savoie Chevrolet in Troy and George Matick Chevrolet in Redford to offer free safety seat checks and installation instructions for area families.

In West Michigan, at Zeeland, Helen DeVos Children's Hospital and Greenville hospitals, access to certified child passenger safety technicians is available.

In-room car seat safety education is offered at our Helen DeVos Children's Hospital and Butterworth, Troy, Royal Oak and Zeeland hospitals to help answer questions and show families how to properly use and install their children's car seats.



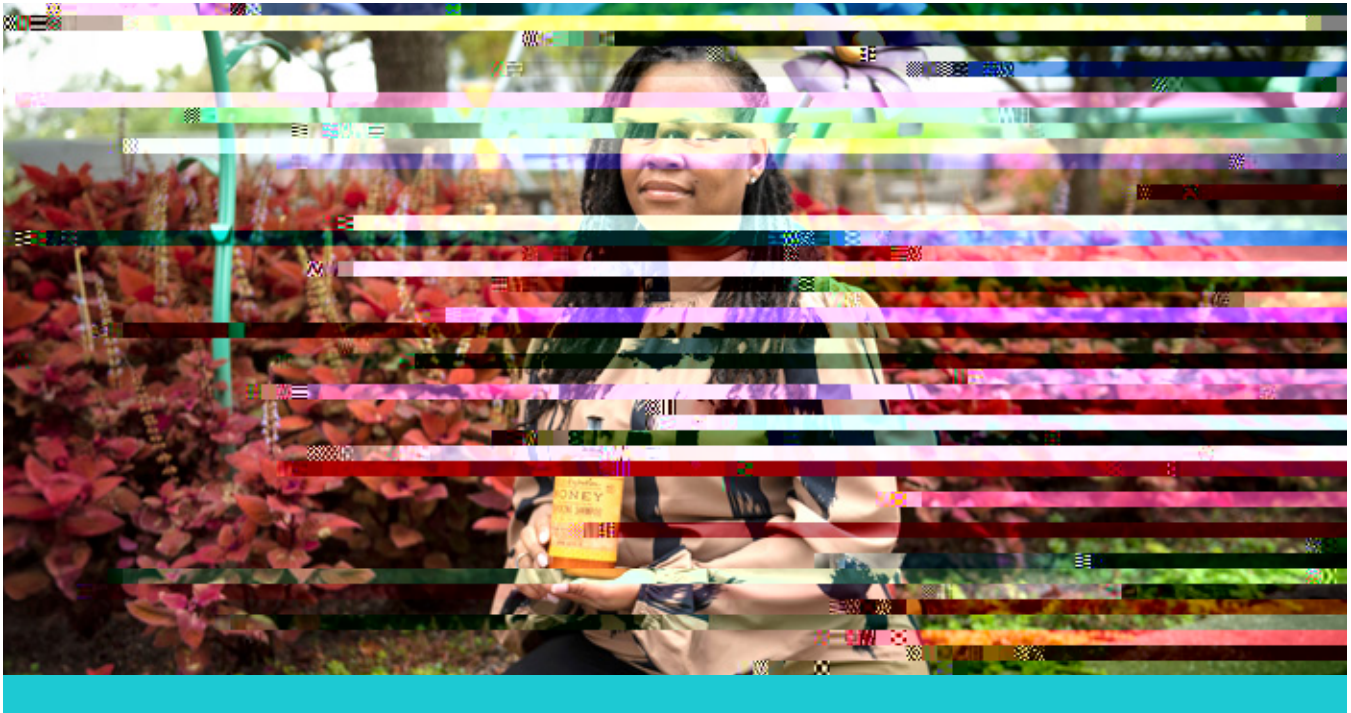
How we use 340B savings

Savings received through the 340B program fund a portion of our community programs, including:

- Community collaborations.
- School clinics.
- Health education.
- Diabetes prevention and management.
- Health screenings.
- Direct clinical services.
- Wellness and healthy lifestyle coaching.
- Walking clubs.
- Drug take-back events for safe and secure disposal of unused pharmaceuticals.
- Generous financial assistance.

Affordable health care can save lives

A surprising hereditary disease haunts Heather Ramirez, of Grand Rapids, and her firstborn,



The Urban Hydration Product Trial helps patients feel more comfortable

While hospitalized, feeling clean and well-cared for brings comfort to many patients. And keeping up a hair care routine often helps patients feel better during a hospital stay. The Diversity Equity and Inclusion team noticed and sought to help more patients access the hair care supplies they needed during their stay.

To address the lack of hair care products for the different hair types and textures, a hair product trial program was initiated.

“The Urban Hydration Product Trial has been a collaborative effort between our DEI team, value analysis procurement, nursing leaders from Corewell Health and our nursing DEI council,” said Phallon LoveLady, DNP, manager, Corewell Health’s Healthier Communities. “Hair care may seem like a minor thing for some, but small changes like offering diverse hair care products can have significant impacts on patient well-being,” Phallon said.

To meet the need, the team added Urban Hydration Honey Health & Repair Haircare Collection shampoo and conditioner to hair care selections available to patients and is working to provide additional supplies to serve to a variety of patient hair types.

Corewell Health will continue to be curious and courageous while we gain clarity, and we will be collaborative and show compassion in our pursuit of improving health, instilling humanity and inspiring hope—even in the hair care products we provide.

Corewell Health is making progress on our 2020 goal to double our spending with certified women-and minority-owned business by 2025.

Achieving health equity can improve the future of health

To grow equity across our service areas, we expanded funding, created infrastructure designed to sustain long-term gains and aligned on a systemwide health equity strategy that focuses on:

Progress highlights

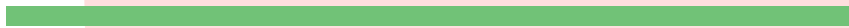
- Community engagement – Corewell Health and Grand Rapids African American Health Institute have enjoyed a partnership since 2012. We recently participated in a Health Disparities Transformational Summit where the event aimed to shed light on the critical issue of health disparities and explored solutions and change for our most vulnerable and marginalized communities.
- Maternal Health Equity Series – In collaboration with Michigan State University's Affiliated Obstetric & Gynecological Residency Network, Corewell Health offered the Advancing Maternal Health Equity Series. The series elevated pressing issues impacting maternal health. In addition to Corewell Health, the MSU network includes providers from five Michigan health systems: Ascension, Corewell Health, Henry Fte2w5w-2 (Span4 (g Mat)19 (er)8 (d t19 (o C.9 (r)13 (om fil)9 (CO (d t19 6 (al)-2 (th. In a)-

Narrowing racial health inequities

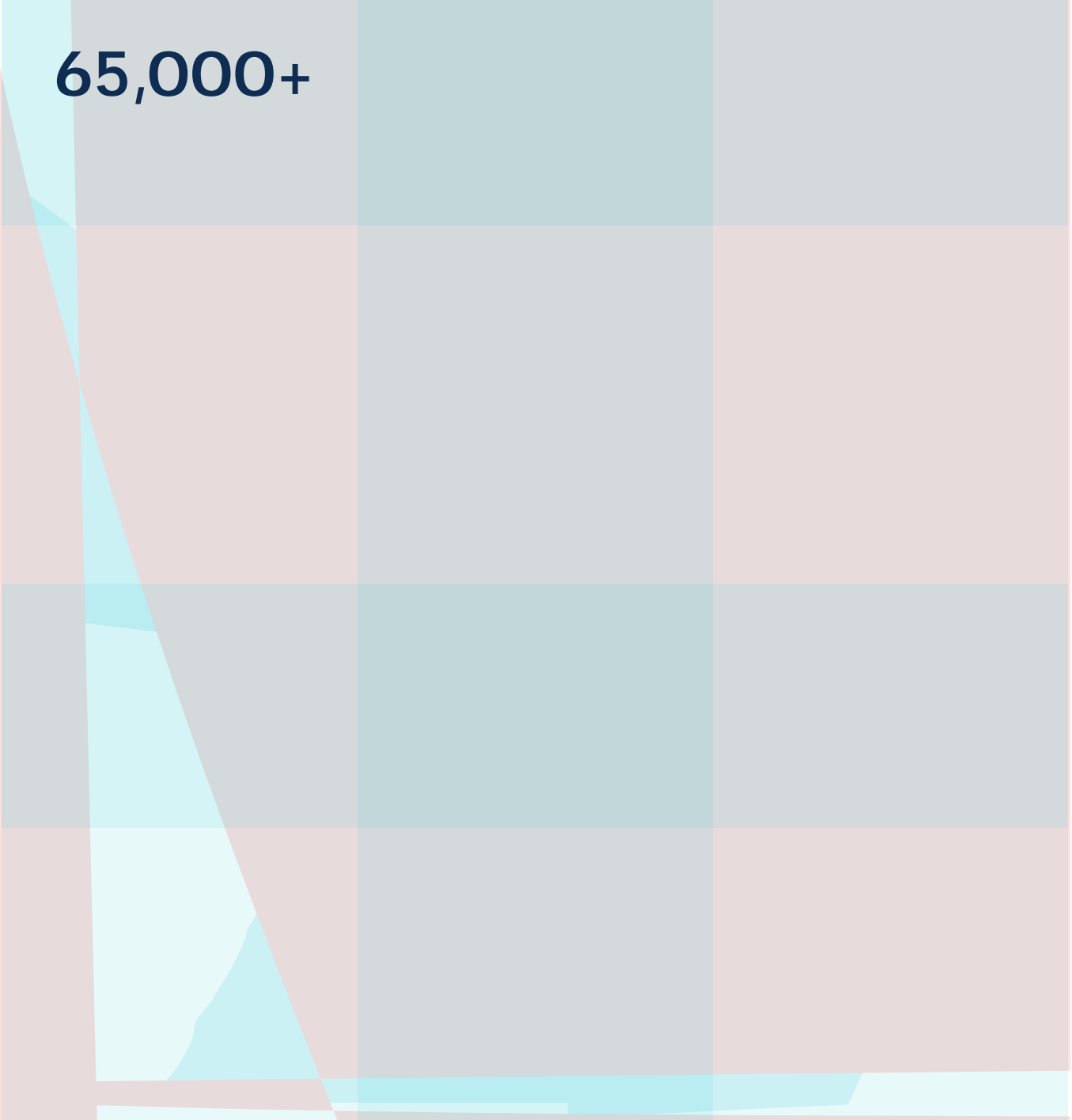
The Center for Wellness opened its doors in October 2020 thanks to a \$1.2 million federal grant to help narrow racial inequities in COVID-19 infections and deaths among Benton Harbor residents.

Supported by Corewell Health in Southwest Michigan, the center now provides cardiology, mental health as well as social and legal navigation services.

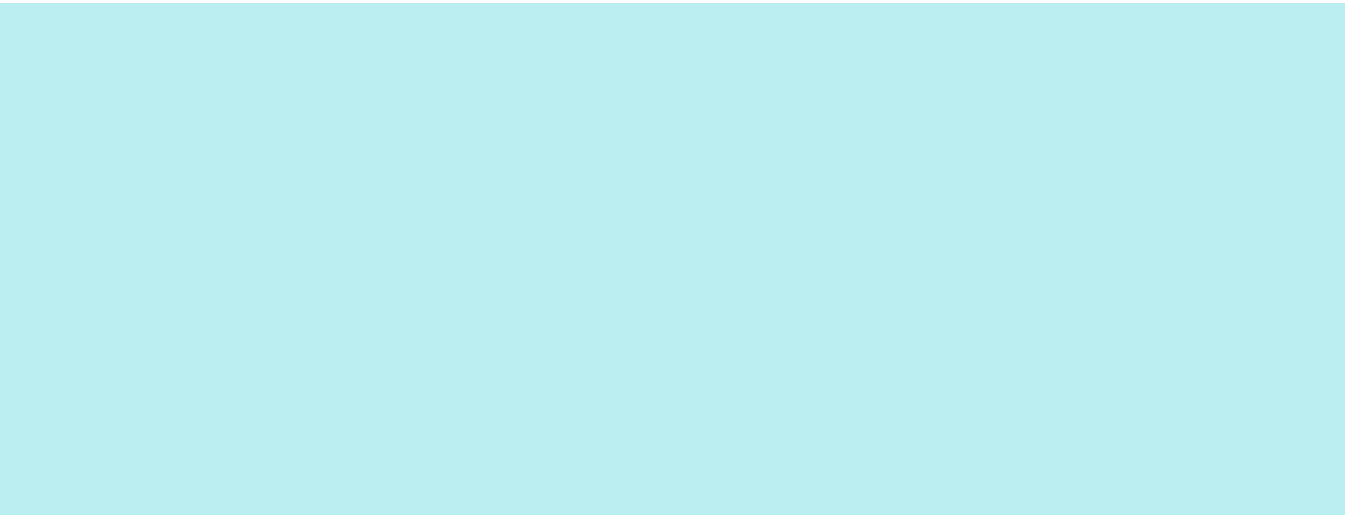
“The center helped many people including a gentleman who was recently able to have his

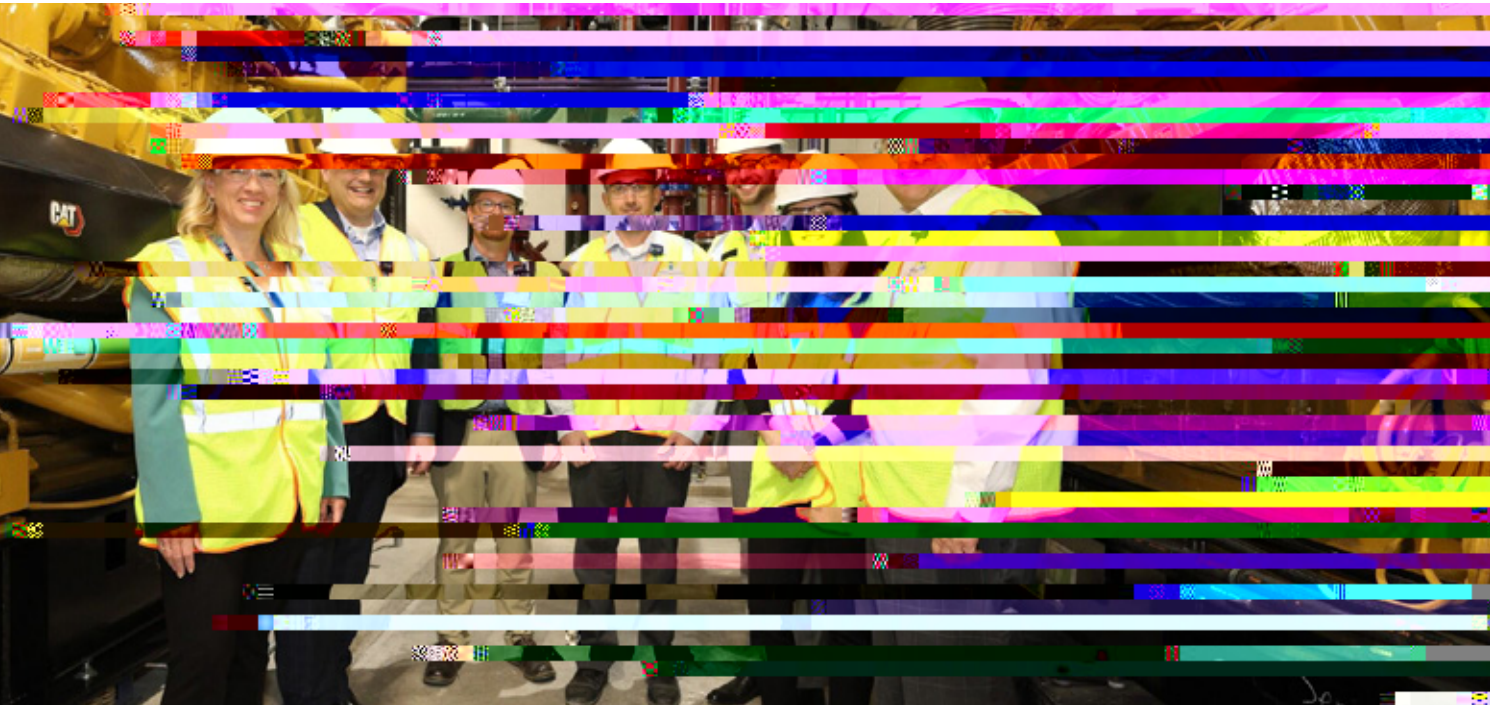


65,000+



How can we achieve sustainable health care?





Partnering with our community for greater impact

Corewell Health and Anu Sushi began a partnership at Butterworth Hospital in West Michigan to provide a healthier food selection for patients, families and team members who visit the cafeteria. Anu Sushi is a local and minority-owned company with a commitment to social responsibility.

This partnership helped them expand their business from four to eight locations. They also employ dozens of refugees and have donated tens of thousands of meals to orphans in Myanmar, Southeast Asia. Corewell Health expanded Anu Sushi's presence to include Corewell Health Lakeland Hospital and additional locations are under consideration.



DID
YOU KNOW
?

Our 2.35-acre solar array generates 16% of Corewell Health Rehab and Nursing Center's energy needs.

72% of Butterworth Hospital's electricity is provided by two natural gas-fired, five megawatt co-generation facilities.

Corewell Health is committed to purposely choose actions that make a positive, sustainable impact on people, our environment and the economic health of the communities we serve. And as our communities grow, we pledge to grow with them to continue being the most trusted source of advanced, compassionate care in Michigan.



corewellhealth.org